

[www.nbweirui.com](http://www.nbweirui.com)

OUR INNOVATION IS  
YOUR SUCCESS



宁波威瑞精密机械有限公司  
NINGBO WEIRUI PRECISION MACHINERY CO., LTD.

宁波市北仑区大港工业城南海路66号  
No. 66 Nanhai Road, Dagang Industrial Park,  
Beilun, Ningbo, Zhejiang Province, China 315800  
**Tel.** 86-574-5512-8188 **Fax.** 86-574-5512-8160  
**E-mail.** [sales@nbweirui.com](mailto:sales@nbweirui.com)



Design by Polaris 2015-04 +86-424-11070



[www.nbweirui.com](http://www.nbweirui.com)



# WEIRUI



## About Us

### 關於威瑞

- 2008** • 由林總經理帶領團隊成立寧波威瑞，團隊成員具有近 30 年專業生產製造經驗。
- 2010** • 成為全球注塑機大廠赫斯基 Husky Injection Molding 精密組件供應商。
- 2012** • 經歷兩年的努力，通過注塑機大廠赫斯基 Husky Injection Molding 的製程與品檢考核，將寧波威瑞列為全球首選供應商。
  - 搬移至新廠，採用最新一站式整合製造設備生產（包含熱處理車間以及機械加工車間），將所有製程整合於廠內，全面提升品質。
- 2013** • 申請 ISO 9001-2008 國際認證中。產品銷售遍及加拿大、美國、盧森堡、奧地利、中國、泰國、日本、台灣等地。
- 2008** • Founded by Ningbo Weirui General Manager, Mr. Cheng Hung-LIN and his business partners with excellent experiences and expertise of over 30 years Taiwan screw and barrel manufacturing technology. In addition to screw and barrel products, Ningbo Weirui's consistent expansion into precision assembly parts manufacturing for global injection machinery manufacturer has further value-add both party's productivity to stay ahead in today's cost competitive global markets.
- 2010** • Approved supplier for Husky Injection Molding China for the machinery precision parts.
- 2012** • Certified as global preferred supplier by Husky Injection Molding Global ( Canada )
  - Moved to new factory with an in-house 1-stop integrated manufacturing facility from r&d, design, heat treatment and precision machining production.
- 2013** • Certification of ISO 9001-2008 is in progress.

### 經營理念

開拓進取，精益求精，採取最新最完整廠內一站式整合製造設備生產—包含研發、設計、製造、生產、品檢等製程，精準掌握客戶需求，提供”零缺點”品質。

### 經營方針

卓越品質、致力專業、信守承諾、共創雙贏

### 經營概況

廠房面積：7000 平方米  
員工人數：約 150 人  
年營業額：人民幣 3200 萬 ( 2013 年 )  
年產出量：約 800 組以上 ( 2013 年 )

### Business Mission

Ningbo Weirui is always committed to drive innovation, motivation, determination and staffs teamwork spirit to achieve our “Daily Corporate Goals” to meet customer's highest quality standard and deliver the best products and services with our in-house 1-stop Manufacturing technology. Hence consistently driving this mission will increase productivity, machine uptime, efficiency and satisfaction for both customers and Ningbo Weirui.

- Quality First
- On-Time Production
- On-Time Delivery
- Customers Satisfaction
- Win-Win Partnership
- Profit Optimization

### Business Profile

Factory Area: 7,000 square meters  
Employees: approx. 150 people  
Annual Sales Revenue: RMB 32 million (Year 2013)  
Annual Output: approx. 800 sets (Year 2013)



# Plastic Injection Molding Series

## 塑膠射出成型系列

料管螺桿為塑膠成型前段加工中最重要的零組件，因應不同的塑膠原料，寧波威瑞選用不同等級鋼材製作，並針對塑料設計適用的料管螺桿，具有耐磨耗、混練效果良好特性，提升製程效率，為您的精良品質嚴格把關！

As the heart components of plastic molding, Ningbo Weirui specially manufactures various types of Barrel and Screw with the highest level of quality as required by nowadays demanding plasticization needs and challenges coupled with competitive global markets for most industry applications.



品名 / Name	等級 / Grade	材質 / Materials	應用 / Application
料管 Barrel	氮化處理 Nitrided	SACM645- 氮化鋼    ACM2- 離子氮化鋼 38CrMoAL- 高級氮化鋼 ( 鍍鉻 / 鉬 / 鋁合金鋼 / 氮化處理，HRC > 68，厚 0.5mm )  SACM645- Nitrided steel    ACM2- Ion-nitrided steel 38CrMoAl- Premium Nitrided steel ( Chromium/Molybdenum/Aluminum Alloy Steel/Nitrided HRC > 68, 0.5mm thickness )	樹脂混合玻璃纖維 < 5% Resin with Glass-fibre < 5%
	C 級 Type C	雙合金 ( 鍍碳化鎢 / 鉻 / 鎳 / 高硼合金鋼，碳化鎢成分 > 15%，HRC 50-55，厚 1.5mm )  Bi-Metallic ( Tungsten Carbide / Chromium / Nickel / Boron Alloy Lining, Tungsten Carbide > 15%, HRC 50-55, 1.5mm thickness )	樹脂混合玻璃纖維 10-20% Resin with Glass-fibre 10-20%
	B 級 Type B	雙合金 ( 鍍碳化鎢 / 鉻 / 鎳 / 高硼合金鋼，碳化鎢成分 > 25%，HRC 55-60，厚 1.5mm )  Bi-Metallic ( Tungsten Carbide / Chromium / Nickel / Boron Alloy Lining, Tungsten Carbide > 25%, HRC 55-60, 1.5mm thickness )	樹脂混合玻璃纖維 20-30% Resin with Glass-fibre 20-30%
	A 級 Type A	雙合金 ( 鍍碳化鎢 / 鉻 / 鎳 / 高硼合金鋼，碳化鎢成分 >40%，HRC 60-65，厚 1.5mm )  Bi-Metallic ( Tungsten Carbide / Chromium / Nickel / Boron Alloy Lining, Tungsten Carbide > 40%, HRC 60-65, 1.5mm Thickness )	樹脂混合玻璃纖維 40-50% Resin with Glass-fibre 40-50%

品名 / Name	等級 / Grade	材質 / Materials	應用 / Application
螺桿 Screw	氮化處理 Nitrided	SACM440- 中碳鉻鉬合金鋼 ACM2- 離子氮化鋼    42CrMo- 結構鋼 38CrMoAL- 高級氮化鋼    DH2F- 模具鋼 SACM645 氮化鋼  SACM440- Medium Carbon, Chromium and Molybdenum Alloy steel ACM2- Ion-nitrided steel    42CrMo- Structural steel 38CrMoAL- Premium Nitrided steel    DH2F- Mold steel (Chromium / Molybdenum / Aluminium Alloy steel / Nitrided, HRC > 63, 0.03mm thickness)	樹脂混合玻璃纖維 < 5% Resin with Glass-fibre < 5%
	C 級 Type C	V4- 模具鋼    1.2379- 韌性高鉻鋼 ( 粉末冶金合金工具鋼，真空硬化處理 HRC 58-60)  V4- Mold steel    1.2379- Hardened High-Chromium steel ( Powder-metallurgical Alloy steel, Vacuum hardened, HRC58-60 )	樹脂混合玻璃纖維 10-20% Resin with Glass-fibre 10-20%
	B 級 Type B	M35- 高速鋼    M2- 高速鋼    V4 粉末合金鋼 ( 粉末冶金合金工具鋼，真空硬化處理 HRC 60-62)  M35-High-speed steel    M2- High-speed steel V4- Mold steel ( Powder-metallurgical Alloy steel, Vacuum hardened, HRC60-62 )	樹脂混合玻璃纖維 20-30% Resin with Glass-fibre 20-30%
	A 級 Type A	ASP23- 鉻鉬鈮粉末鋼    W650- 高鉻粉末合金鋼 ( 粉末冶金合金工具鋼，真空硬化處理 HRC 63-65)  ASP23- Chromium-Molybdenum-Vanadium powder Alloy steel W650- High-Chromium powder Alloy steel ( Powder-metallurgical Alloy steel, Vacuum hardened, HRC60-62 HRC 63-65 )	樹脂混合玻璃纖維 40-50% Resin with Glass-fibre 40-50%

# Front-End Components

注塑機零配件

威瑞在注塑機零配件中，擁有豐富的經驗，完整的品檢流程，使得產品可以被許多歐美以及日本廠家所採用。

Ningbo Weirui designs and manufactures a complete line of front-end components ( Barrel Head, Nozzle Tip, Screw Tip or Ring Valves ) according to O.E.M. customized and standard designs from a variety of abrasion and corrosion resistant steels or alloys that are best suited to our global customers processing needs and polymer requirements.

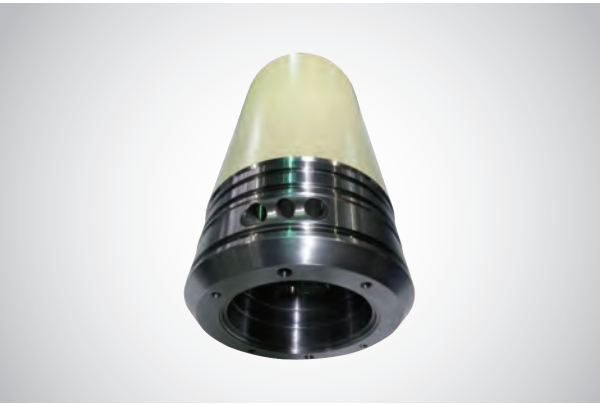
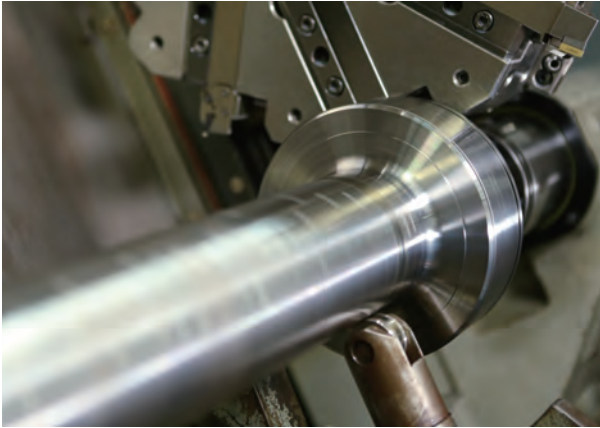
品名 / Name	材質及加工 / Materials and Process
過膠頭 Screw Tip	SACM645- 氮化鋼，V4- 模具鋼，1.2379- 韌性高鉻鋼，ASP23- 鉻鉬鈮粉末鋼，DH2F- 模具鋼，DC53- 工具鋼，H13 ( SKD61)- 模具鋼。採用電火花線切割 / 離子氮化處理 / 鍍鉻 / 鍍鈦 / 真空鍍鉻加工。 SACM645-Nitrided steel, V4-Mold steel, 1.2379-Hardened high-chromium steel, ASP23-Chromium-molybdenum-vanadium steel, DH2F-Mold steel, DC53-Tool steel, H13 (SKD61)-Mold steel with optional EDM wire-cutting / ion-nitriding / chrome plating / titanium plating / vacuum chrome plating.
法蘭 Flange (Barrel Head)	SACM645- 氮化鋼，SCM440- 中碳鉻鉬合金鋼，SUS440C- 不鏽鋼，H13 ( SKD61)- 模具鋼。採用放電加工 / 離子氮化處理 / 鍍鉻 / 鍍鈦 / 真空鍍鉻加工。 SACM645-Nitrided steel, SCM440-Medium carbon, chromium and molybdenum alloy steel, SUS440C-Stainless steel, H13 (SKD61)-Mold steel with optional EDM wire-cutting / ion-nitriding / chrome plating / titanium plating / vacuum chrome plating.
噴嘴 Nozzles	SACM645- 氮化鋼，1.2379- 韌性高鉻鋼，SCM440- 中碳鉻鉬合金鋼，SUS440C- 不鏽鋼。採用放電加工 / 離子氮化處理 / 鍍鉻 / 鍍鈦 / 真空鍍鉻加工。 SACM645-Nitrided steel, 1.2379-Hardened high-chromium steel, SCM440-Medium carbon, chromium and molybdenum alloy steel, SUS440C-Stainless steel with optional EDM wire-cutting / ion-nitriding / chrome plating / titanium plating / vacuum chrome plating.



# Precision Assembly Parts

精密零組件系列

寧波威瑞精密零組件系列的核心價值在於可以提供給客戶完整的解決方案，從原物料到成品一站式生產，維持穩定良好的精密加工品質，同步提升客戶與自身的產能。也因為如此，寧波威瑞在 2010 年成為國際知名注塑機大廠赫斯基 Husky Injection Molding 研發工程的最佳夥伴，這對於寧波威瑞拓展全球事業版圖來說是個重要的里程碑。



Our Precision assembly parts division is among the core business products portfolio and has continuously enhanced our precision capabilities and expertise resources, providing our customer the best in-house 1-stop manufacturing solutions from Raw material to delivery for prototyping projects into volume production.

Ningbo Weirui has also consistently invested in the optimization of its manufacturing process with customer's “ Innovation Partnership” to further create and add-valued both party's production productivity and profitability growth to meet nowadays demanding industry's needs, specifications, and cost competitive global markets.

This investment has added another milestone being certified as Global Preferred Supplier by Husky Injection Molding Global ( Canada ) in 2012, delivering the parts globally to China, Canada, USA and Europe.





# Rubber Injection Molding Series

橡膠射出成型系列

針對橡膠原料具有的彈性特性，從料管螺桿的材質選用、設計、加工，寧波威瑞為您量身打造，有效提升射出量的一致性，精良品質讓您輕鬆克服製程困難，耐磨耗特性，讓您節省生產成本，提高生產品質！

威瑞秉持著一貫的傳統，從多年製造橡膠機螺桿經驗中，為客戶提供最好的品質。應用於大多數橡膠機、液體硅膠機相關產業。

As the heart components of elastic rubber molding, Ningbo Weirui specially manufactures various types of customized Barrels and Screw with the highest level of quality and excellent abrasion resistant alloy steel as required by nowadays demanding needs and requirement challenges coupled with competitive global markets for most rubber and liquid silicone industry applications.



## Injection Barrels

- Nitrided Barrel is both economical and general purpose to meet most rubber and liquid silicone applications unless otherwise specified for special applications.
- Barrel size: 300 – 10,000cc ( volumetric capacity ) by dia 40 – 200mm )

## Injection Screws

- Nitrided Screw is both economical and general purpose to meet most rubber and liquid silicone machinery applications unless otherwise specified for special applications.
- Screw size: dia40-600mm by 300 – 1000mm Length

品名 / Name	等級 / Grade	材質 / Materials	硬度 / Hardness	應用 / Application
料管 Barrel	氮化 Nitrided	SACM645- 氮化鋼    38CrMoAl- 高級氮化鋼 34CrAlNi7- 鋁鉬鎳鉬合金鋼 ( DIN 1.8550 )  SACM645- Nitrided steel 38CrMoAl- Premium nitride steel 34CrAlNi7 ( DIN 1.8550 ) Nickel-chromium- molybdenum alloy steel	HRC > 68, T=0.5mm	用於大多數橡膠機、液體硅膠機 Used in most rubber machinery, Liquid silicone rubber machine
螺桿 Screw	氮化 ( 全硬化 ) Nitriding ( Full hardening )	SACM645- 氮化鋼    D2- 模具鋼 38CrMoAl- 高級氮化鋼 42CrMo- 鉻鉬鋼    DH2F- 模具鋼 34CrAlNi7- 鋁鉬鎳鉬合金鋼 ( DIN 1.8550 )  SACM645- Nitrided steel    D2- Mold steel 38CrMoAl- Premium nitride steel 42CrMo-Chromium-molybdenum alloy steel DH2F- Mold steel 34CrAlNi7- Nickel-chromium-molybdenum alloy steel ( DIN 1.8550 )	HRC > 68, T=0.5mm ( HRC 58-62 )	
柱塞 Piston	氮化 Nitrided	SACM645- 氮化鋼    38CrMoAl- 高級氮化鋼 34CrAlNi7 ( DIN 1.8550 ) 鋁鉬鎳鉬合金鋼  SACM645-Nitrided steel 38CrMoAl-Premium nitride steel 34CrAlNi7 ( DIN 1.8550 ) Nickel-chromium- molybdenum alloy steel	HRC > 68, T=0.5mm	
止逆閥 Non-return valve	氮化 Nitrided	SACM645- 氮化鋼    38CrMoAl- 高級氮化鋼 34CrAlNi7 ( DIN 1.8550 ) 鋁鉬鎳鉬合金鋼  SACM645- Nitrided steel 38CrMoAl- Premium nitrided steel 34CrAlNi7 Nickel-chromium-molybdenum alloy steel ( DIN 1.8550 )	HRC > 68, T=0.5mm	
射座 Barrel Head	氮化 Nitrided	SACM645- 氮化鋼    38CrMoAl- 高級氮化鋼 34CrAlNi7 ( DIN 1.8550 ) 鋁鉬鎳鉬合金鋼  SACM645- Nitrided steel 38CrMoAl- Premium nitrided steel 34CrAlNi7 ( DIN 1.8550 ) Nickel-chromium- molybdenum alloy steel	HRC > 68, T=0.5mm	
射嘴 Nozzles	氮化 ( 全硬化 ) Nitriding ( Full hardening )	SACM645- 氮化鋼    38CrMoAl- 高級氮化鋼 H13 ( SKD61 ) - 模具鋼  SACM645- Nitrided steel 38CrMoAl- Premium nitrided steel H13 ( SKD61 )- Mold steel	HRC > 68, T=0.5mm (HRC 48-52)	



# Manufacturing Facility

## 車間設備

### Heat- treatment Plant 熱處理車間

金屬材質以及熱處理過程的優劣左右金屬的使用性能，寧波威瑞不僅嚴選材質更自設熱處理專用廠房，確保所使用的每一塊金屬材質的穩定性。

熱處理專用廠房一備有調質爐、氣體氮化爐、離子氮化爐、真空爐、雙合金鑄造爐、回火爐。

Well-equipped with Quenching furnace, GasNitriding furnace, Ion Nitriding furnace, Vacuum furnace, Bimetallic Centrifugal furnace and Annealing stove.



### Production Machinery 機械加工車間

如果說材質和熱處理是產品的骨架，那麼機械加工就是賦予它強壯的體魄，精良的設備與加工技術，能夠使設計與實品更為相符，能使每一個組件都能發揮最大功能。

機械加工專用廠房一備有 CNC 車床、加工中心、銜磨機床、普通車床、懸臂鑽床、深孔鑽床、牙底研磨機等加工機械。

Well-equipped with CNC Lathes, NC Machining Center, Centerless Grinding, Lathes, Radial Drilling, Deep Hole drilling and NC Screw Flight machines.

## 1-Stop Facility





# Quality Testing and Inspection Equipment

檢測儀器以及檢測實際情景

精密儀器 嚴格把關

**三次元座標儀** - 用於量測尺寸精度、定位精度、幾何精度及輪廓精度。

**洛氏硬度計** - 量測產品真空熱處理的硬度。

**電子測直儀** - 可量測內孔直線度與垂直度。

**金相測試儀** - 用於切片分析材料組織結構、硬度。

**自動轉台顯微硬度計** - 用於量測硬度。

**膜厚儀** - 用於量測表面電鍍厚度。

**攜帶式表面粗糙度測定儀** - 量測表面粗糙度。

為了確保螺桿套筒的質量水平符合標準，寧波威瑞設有各項相關檢測儀器，進行全方位量測確認，堅守品質，絕不妥協，讓您用的安心放心！

**Coordinate-Measuring Machine ( CMM )**

Measures the precision of dimensions, positioning, geometry and contour.

**Rockwell Hardness Tester**

Measures the hardness of products after vacuum heat treatment.

**Electronic Straightness Tester**

Measures the straightness and verticality of inner bore.

**Metallurgical Tester**

Analyzes the structure and hardness of materials.

**Automatic Turret Hardness Microscope**

Measures material hardness.

**Thickness Tester**

Measures the thickness of surface plating.

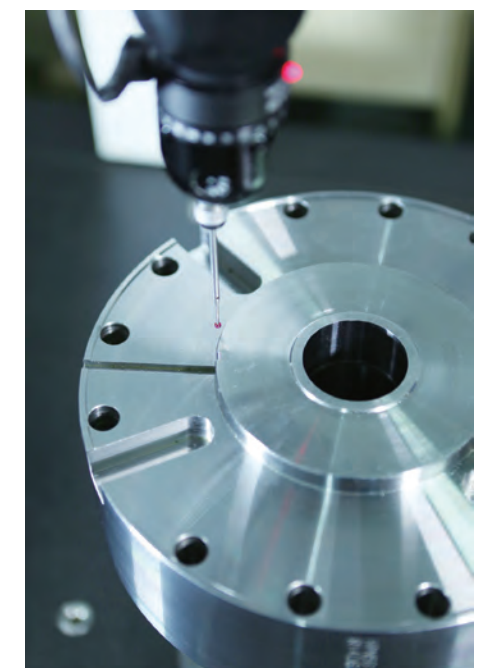
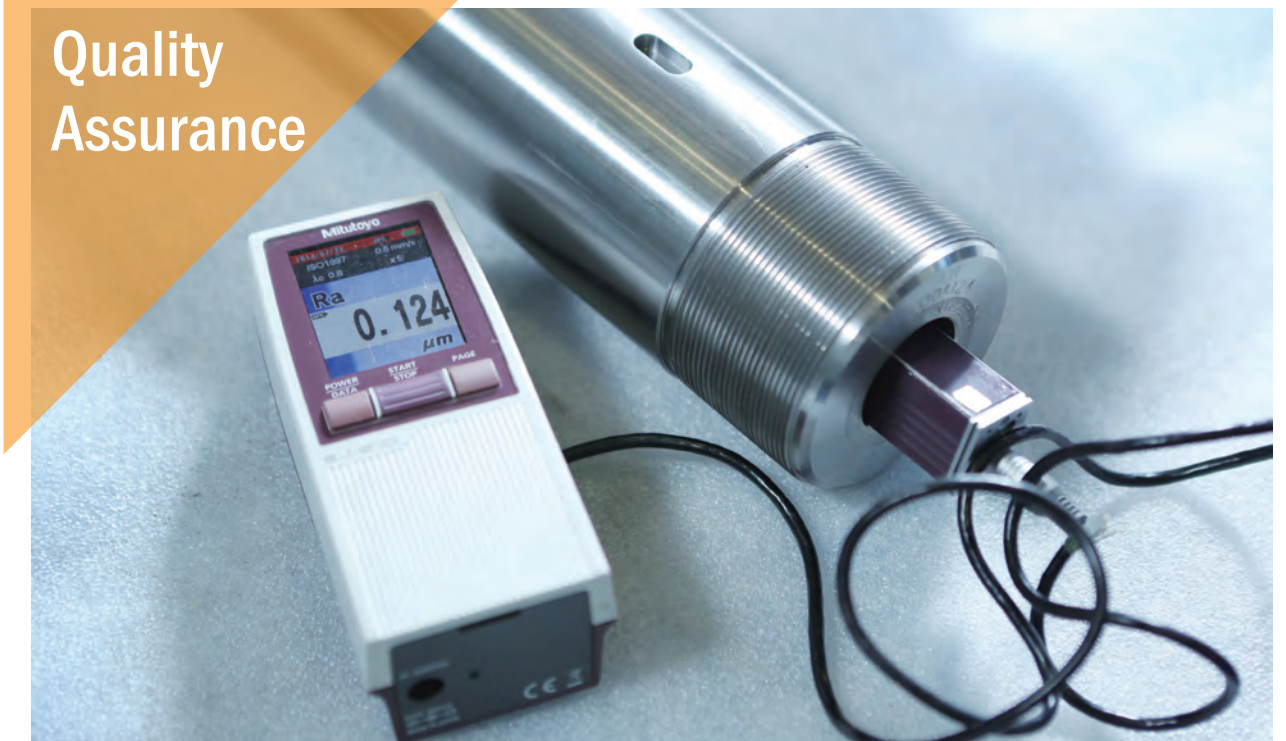
**Portable Surface Roughness Tester**

Measures the surface roughness.

螺桿套筒身為塑橡膠成型前段中重要的設備，肩負相當的成敗因素，不同塑料就有不同螺紋間距、深淺，從熔融、混煉、射出等每一段都有其功能性，因此採用各類儀器，精準掌握每個加工環節，寧波威瑞品質，用戶有信心！

In addition to this equipment, our incoming ISO 9001-2008 certification will further reinforced our quality and inspection process of our Total Quality Management System.

## Quality Assurance





## Quality & Service

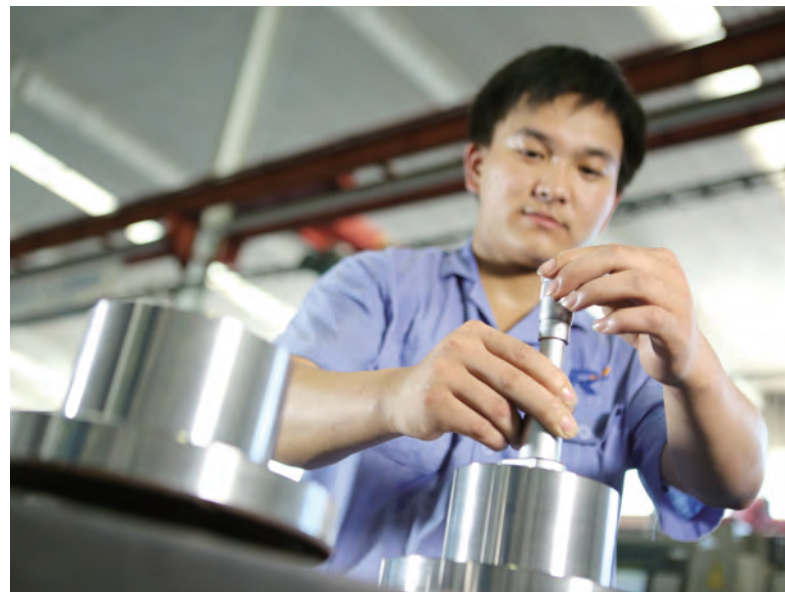
品質 & 服務

寧波威瑞不只專注打造完美品質，專業諮詢服務，打造客製化產品；精良加工技術，成就每一組極致產品；每一分確實，來自於一份責任，每一分服務，來自於一份用心！

In Ningbo Weirui, our excellent quality mission is always the highest commitment towards our global customer's requirement and also our ultimate goal to produce the best products with uncompromised quality level.



- 品質至上，絕不妥協！
  - 準時交貨，信守承諾！
  - 滿足客戶，服務至上！
  - 利潤合理，攜手雙贏！
  - 精良技術，提高效率！
  - 優質服務，一次到位！
  - 經驗豐富，完整諮詢！
  - 客戶第一，使命必達！
- Uncompromised Quality First
  - On-time Delivery Commitment
  - Total Customer Satisfaction
  - Profit Optimization Via Win-Win Partnership
  - Innovative Technology Enhanced Productivity
  - Total Customer Solutions





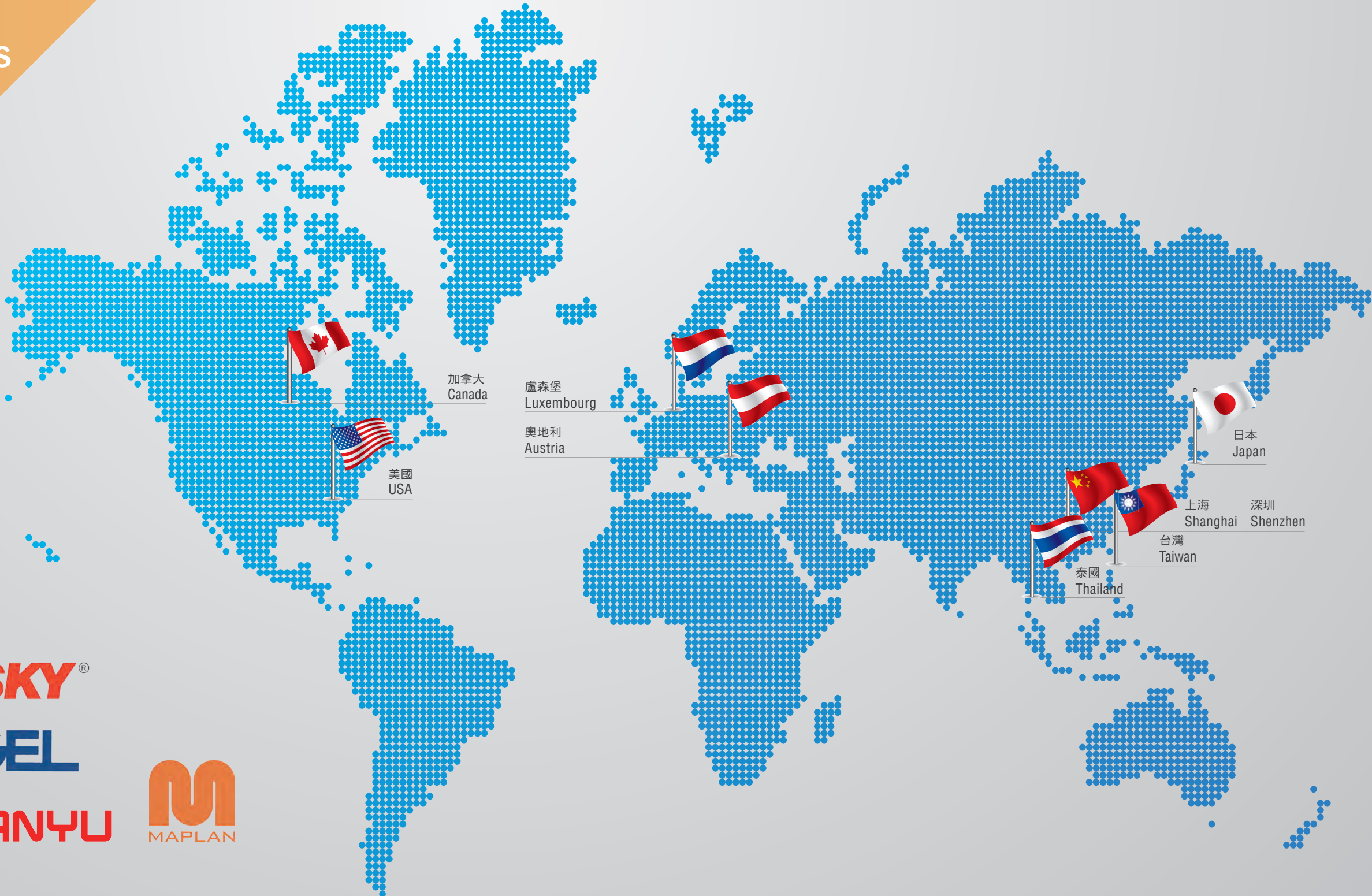
# Global Partners

合作夥伴

寧波威瑞不只是供應商，是您並肩戰鬥的事業夥伴，  
不管您在那裡，寧波威瑞始終與您同行，走遍全球，  
寧波威瑞永遠是您的最佳選擇！。

With Ningbo Weirui as your preferred partner, you are  
always quality-assured to export your products globally  
with excellent “Customer Satisfaction” standard.

## Global Networks



**HUSKY®**

**ENGEL**

**SANYU**

**MAPLAN**



# Vision

## 未來展望

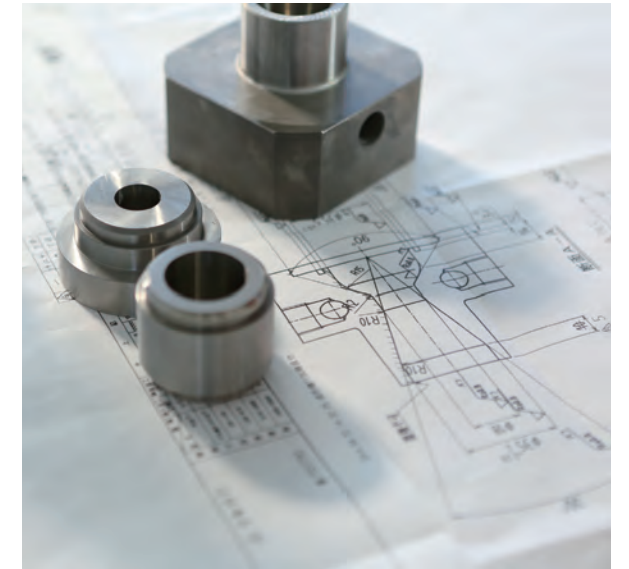
寧波威瑞秉持著推動創新、激勵、決心和團隊合作的精神，同時落實寧波威瑞企業目標 - 滿足客戶對螺桿與料管品質的高度嚴格品質要求以及客戶服務，進而協助客戶從而增加產能、節省成本並提高生產效率。

寧波威瑞將持續運用本身既有的技術與人才優勢，傾注更多精力與想法在創新開發，創造並實現最佳品質的螺桿和料管產品。此外，為客戶創建更多附加價值的產品，讓客戶享有合理價格、優秀品質、完善服務，並協助提升企業獲利能力以及保持高度成長，與合作夥伴共創雙贏。

寧波威瑞的努力執著讓我們發光發亮，成就的不只是我們的目標，還有客戶們的遠大理想。寧波威瑞匯聚技術、人才以及創新，在白熱化競爭市場上做好更刻苦的準備，因為我們正朝著夢想著更大的成功之路邁進！

“ Our Innovation is Your Success “ – this vision passionately drives Ningbo Weirui team to continuously and consistently enhance inspiration, motivation and innovation with best talented human resources into achieving the best quality products for our global customers.

Secondly, to further value-add our production process and services to optimize business profitability and maintain sustainable growth successfully for both customers and Ningbo Weirui.



# People

